

Friends in Christ:

These are the times of our lives. We live, move, and have our being in God's time. At St. Paul's it is time. Time to follow the One who goes before us inviting our faith and our commitment. In a world in which there increasingly seems to be no place for God, god unemployed, god retired, where the liturgical and traditional churches become antiques, there arises a new and loving call from God, Father, Son, and Holy Spirit to go forward in faith: "*Follow Me.*" And so it is time at St. Paul's to go down a new path. It has taken us awhile, but now God, in Christ, turns to this faith community and calls us to act. These *are* the times of *God* in our lives.

Psalm 23 knows that there is evil, darkness, need, death-shadows, and God-longing in our world. And, as the Word of God that shapes us, it speaks to our time. The psalm knows also the caring God who leads us beyond these fears into faith, into calm waters, into tables of reconciliation, and into paths that are right. The grip that the 23rd psalm has on us is strong, deep, and genuine. We know it by heart as it speaks to the heart, even in our time. The third verse carries our capital campaign into clear, compassionate action: "*God leads us in right paths for his name's sake.*"

St. Paul's goes down this path not only because it is a new path. Really, we have been down this road before. We have a rich tradition of visioning and trusting and hoping in the God who leads us. We are not moving forward in this capital campaign because we've forgotten God's promises all these years, no, just the opposite. Continuity is not a negligible factor in human history. St. Paul's has been faithful in many ways for many years. And so we do go forward, not only in a new venture, but risking again the tradition that has lovingly held us. A deep communal tradition is a vitally important ingredient in the life of individuals, organizations, and societies. And so it is time to trust again our one long-term purpose and value. This One, revealed in the 23rd psalm, who leads us again down the right path.

FAITH FORWARD is a congregation-wide, equal sacrificial, personally significant, financial stewardship plan to meet our stated 3.1 million dollar goal. You will agree that each of us feels privileged to be given the opportunity to be a part of such a great effort that will have an impact on the lives of others and on the church at large for years to come. Join us at St. Paul's in **FAITH FORWARD**. Your pledge over a three-year period will be pooled into a vision that will begin to take focus: we will see again and follow anew the path where God leads.

In Christ,
Pastor Colley

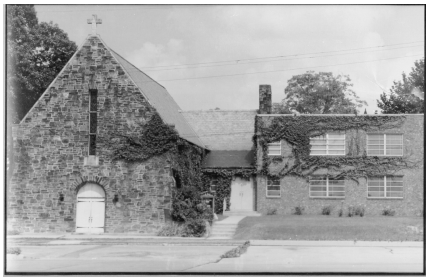
St. Paul's is a community that lives its faith in Jesus Christ through worship, education, fellowship and involvement in the community and world. Our rich history is a guide to the future, changing and growing in response to God's love and call.

"Ever since a small group of Lutherans petitioned the North Carolina Synod to begin holding worship services in Durham, faith that they could grow in number and build a congregation and church has been a hallmark of what became and is St. Paul's Evangelical Lutheran Church." - Doris Tilley, Historian for St. Paul's Lutheran Church

A Brief History

In 1920, the North Carolina Synod authorized The Rev. Arthur M. Huffman of Raleigh to begin traveling to Durham to conduct worship services for a small group of Lutherans. In June 1922, twelve charter members

organized the Durham Mission, which became St. Paul's Evangelical Lutheran Church. "He



(Jesus) called the twelve and began to send them out..." (Mark 6:7). Until the first church building was constructed and occupied in April 1929, worship services were held in the YMCA and Durham Business School. Despite the hardships through the Depression Years, St. Paul's survived and prospered. In December of 1944, the \$30,000 mortgage was paid off.

A new education building was opened in 1956 with enough space to allow for a full program of Sunday Church School, Weekday Church School, and Vacation Church School. The \$52,000 mortgage for the education building was paid off in January 1960.

By 1957, significant development was taking place in Durham. The founding of the Research Triangle Park and plans for the Durham East-West Expressway were to change the course of history for St. Paul's. In 1968, the church building was demolished to

make way for the East-West Expressway. Our present building was constructed that same year, with the first worship service held on October 6, 1968 and dedicated on December 8, 1968. The \$87,000 loan, taken out for building the new church in 1967, was paid off in 1978, five years ahead of schedule.

"Our church goes forward, not by standing on present accomplishments, or glorifying in yesterday's achievements, but by using the excellent record of today as an inspiration for a better tomorrow. The continued growth of St. Paul's should symbolize a congregation of increased strength, usefulness, and compassion, and should typify our purpose to serve this area with ever-increasing effectiveness." - Wade Cavin, 1967.



What is happening at St. Paul's?

St. Paul's is a growing faith community in a growing and changing community. Flourishing ministries in worship, music, education, and social outreach all require expansion in the areas of rooms, kitchen, storage, and parking.

St. Paul's Lutheran Church has been moving **Forward In Faith** through the Holy Spirit-led project of our congregation to build new spaces and renovate existing space for gospel ministry. Visioning started back in 1992 and like the branches of a tree, each branch developed different tasks and goals. There was a Long Range Planning Task Team, a Self Study, Cottage Meetings, Leadership retreats, Great Things 2001 and a Strategic Site Task Team - all part of the visioning. The studies were evaluated and the highlighted needs are:

- greater fellowship and multi-purpose spaces
- more classroom space for education, group meetings and community service
- worship enhancements: chapel, sacristy,

- additional seating
- parlor facilities for weddings and funerals

In January 2003, the Land Acquisition Task Team began negotiations with Mrs. Doris Paschal, our neighbor. By the summer of 2003, final plans were made to buy and lease the Paschal Property. The Ministry and Facilities Committee developed a "Ministry Plan Priorities" list and the following priorities were overwhelmingly passed by a vote at the congregational meeting in December 2003:

1. Finalize land purchase
2. Erect new multipurpose space to accommodate education, fellowship, youth ministry, and community outreach
3. Renovate non-sanctuary portion of existing structure to accommodate administrative and some educational/meeting needs
4. Renovate existing sanctuary
5. Erect a new sanctuary

FAITH FORWARD – Building Committee

In the year 2004, The Building Committee and the Capital Campaign Steering Committee were created. By the end of that year, the members of the Executive Committee and the chair of the Land Acquisition Committee joyfully closed on the first step of the buy/lease plan of the Paschal Property. One Acre and the Vicarage were purchased at a cost of \$50,000, which has subsequently been paid off. We are also leasing the remaining acreage, approximately 4 acres ± for \$750 a month.

In 2005, the Building Committee selected, and is working with Robert Sotolongo of DTW Architects, translating the needs of our

congregation into potential "bricks and mortar" solutions. This is where we are – developing a master plan to meet our current and future needs which include:

- a new multi-use fellowship space with modern kitchen facilities
- welcoming atrium and foyer
- expanded classroom space
- improved accessibility in all areas
- family support spaces
- expanded office space
- worship space: expanded seating; chapel space; choir and music space, sacristy

What will it cost?

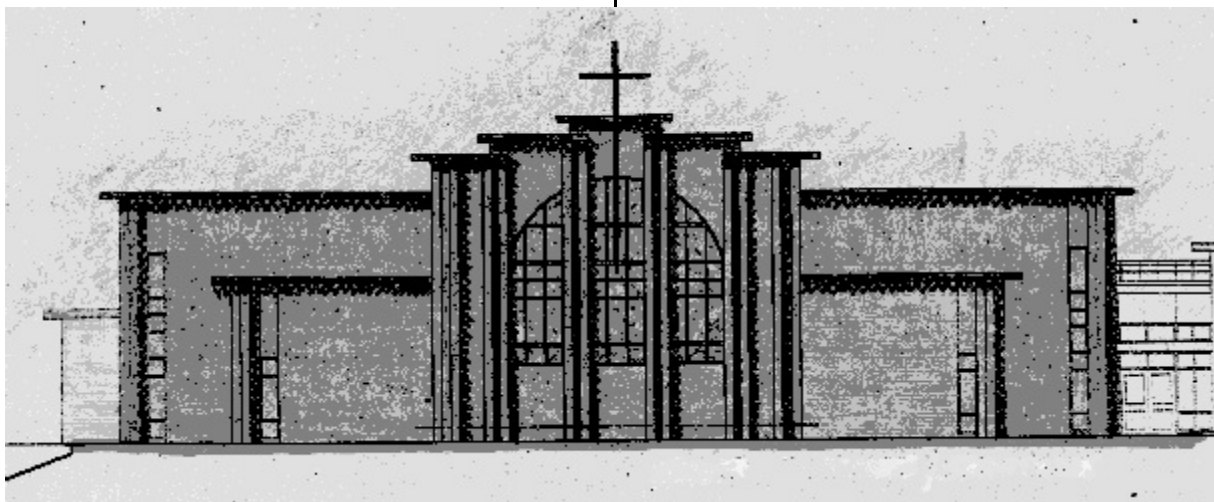
Initial estimates for this multi-faceted project are approximately \$3.1 million.

What is our financial plan?

To conduct a Capital Stewardship Campaign. Our campaign, *FAITH FORWARD* is both spiritually centered and fiscally responsible.

- It empowers each member to discern and personally respond to God's call.
- It empowers St. Paul's as a community in Christ to discern and respond to God's call to be the body of Christ in this place.
- Each member will have the opportunity to further St. Paul's mission through a three-year pledge, giving above and beyond their annual giving pledges. Additionally, it enables us as a congregation to minimize our future debt.

"Faith combined with the firm belief in God's guidance as challenge after challenge faced the determined congregation over the years has brought us to our present FAITH FORWARD campaign."



What is expected of me?

What can I do?

**PRAY
GET INVOLVED
VISION FOR OTHERS
GIVE**

PRAY - Give thanks for God's great blessings in our lives and in the **grace** we share; seek God's will for our congregation, our vision of service to God and our community and own personal individual stewardship decisions.

GET INVOLVED - in the ongoing **mission** of the church, on a building sub-committee, on a team as part of the **FAITH FORWARD** campaign.

VISION FOR OTHERS - God is love and St. Paul's will reach others in **compassionate** love as our community serves in exciting ways those outside our present membership.

GIVE - make your own **prayerful** pledge and giving decisions.

What should a **FAITH FORWARD** gift be?

A **FAITH FORWARD** gift is a reflection of your personal, loving stewardship response.

Each member is asked to reflect on God's grace at work in daily life and give sacrificially to better enable God's work in our faith and wider community. A gift can take many forms: a weekly or monthly pledge over the three-year pledge period or a gift of a tangible asset such as stocks, bonds, property, etc. If you have any questions concerning a gift in kind, please contact Gus Holshouser, the **FAITH FORWARD** campaign treasurer.

Your pledge is personally significant for you and your family, prayerfully considered, and sacrificially returned to God.

How do I make my pledge?

If you wish to make an Advance Gift, complete a commitment card and forward it to St. Paul's prior to November 13, Commitment Sunday. On Commitment Sunday, all members will be invited to submit their **FAITH FORWARD** pledges as part of the worship service.

What if we do not have all of the money pledged?

It would be ideal to raise the entire projected cost. This would enable maximum construction and cost efficiency. If the entire costs are not pledged, decisions will need to be made regarding affordable priorities. Debt will be considered for funding the balance of costs.

When will construction begin?

Construction is expected to begin in the spring of 2006.

What happens next?

St. Paul's continues to grow and serve.

The **FAITH FORWARD** campaign continues as we refine our plans.

The future of St. Paul's is in God's hands, working through us, and leading us in right paths.

*"Faith combined with the firm belief in God's guidance and boundless love, as challenge after challenge faced the determined congregation over the years has brought us to our present **FAITH FORWARD** campaign." - Doris Tilley, Historian, St. Paul's Lutheran Church, Durham*

Catch the Excitement!
Witness the Joy!
Shape the Vision!

